

T. & A. RAPER


LOT (DP 285128),
SOUTH DENILQUIN COUNTY, NSW

ENGINEERING DESIGN FOR RETAINING WALL ON RIVER BANK

SHEET INDEX


| SHEET NUMBER | SHEET NAME | CURRENT REVISION | REV DATE |
|--------------|---------------------------------|------------------|------------|
| A001 | TITLE SHEET | CI | 17/12/2024 |
| A100 | SITE PLAN | CI | 17/12/2024 |
| A101 | RETAINING WALL ENLARGED PLAN | CI | 17/12/2024 |
| A200 | SECTION | CI | 17/12/2024 |

PROJECT ENGINEER



CONSTRUCTION ISSUE

| | | | | |
|-------|------------|--------------------|--|--------|
| CI | 17/12/2024 | CONSTRUCTION ISSUE | | J.C |
| Index | Date | Description | | Author |



DRAFTING SOLUTIONS


STRUCTURE IN VISION. STRUCTURE IN DESIGN

| | | | | | |
|----------|------------|-------|-------------|---------|------|
| DRAWN BY | DATE | SCALE | PROJECT No. | DRG No. | Rev. |
| J.C.C. | 17/12/2024 | | 24-S2533 | A001 | |

CLIENT
T. & A. RAPER




PROJECT - WESTERN LOW RETAINING WALL
LOT (DP 285128),
SOUTH DENILQUIN COUNTY, NSW

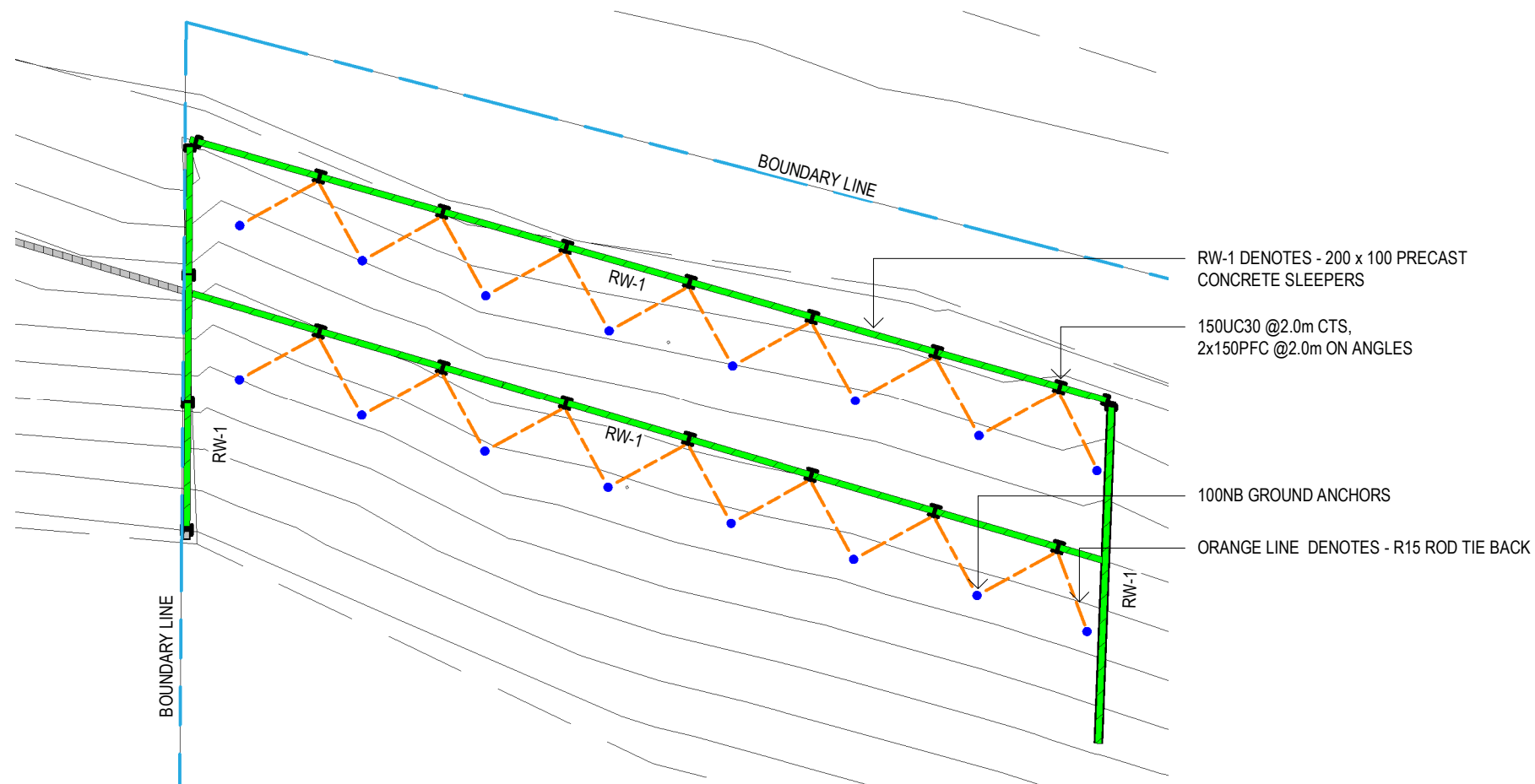
TITLE SHEET



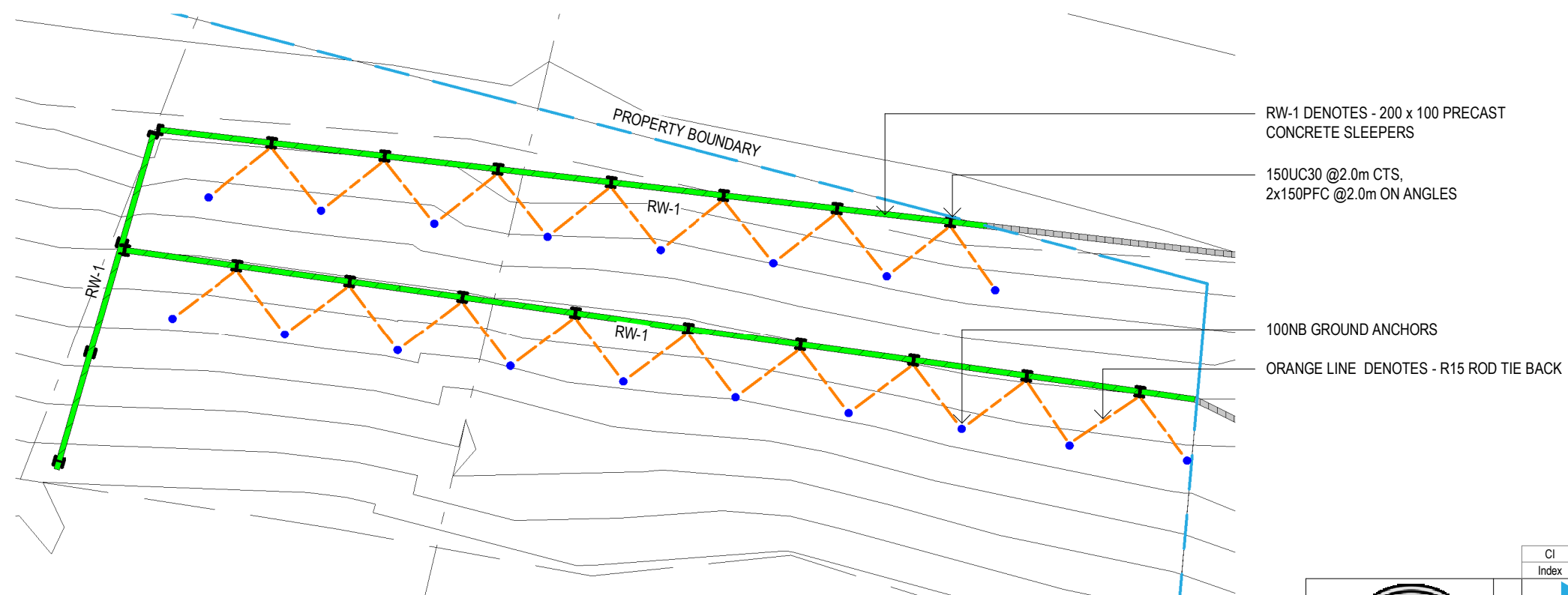


SITE PLAN
SCALE - 1 : 250



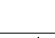
| | | | | | | | |
|------------------|---|--------------------|---|-----------------|---|--|--------|
| PROJECT ENGINEER |  | CONSTRUCTION ISSUE | CI | 17/12/2024 | CONSTRUCTION ISSUE | | J.C |
| | | | Index | Date | Description | | Author |
| | | | <div><div>CLIENT T. & A. RAPER</div><div>PROJECT - WESTERN LOW RETAINING WALL LOT (DP 285128), SOUTH DENILQUIN COUNTY, NSW</div></div> | | | | |
| DRAWN BY | DATE | SCALE | PROJECT No. | DRG No. A100 | Rev. | | |
| J.C.C. | 17/12/2024 | 1 : 250 | 24-S2533 | SITE PLAN |  | | |

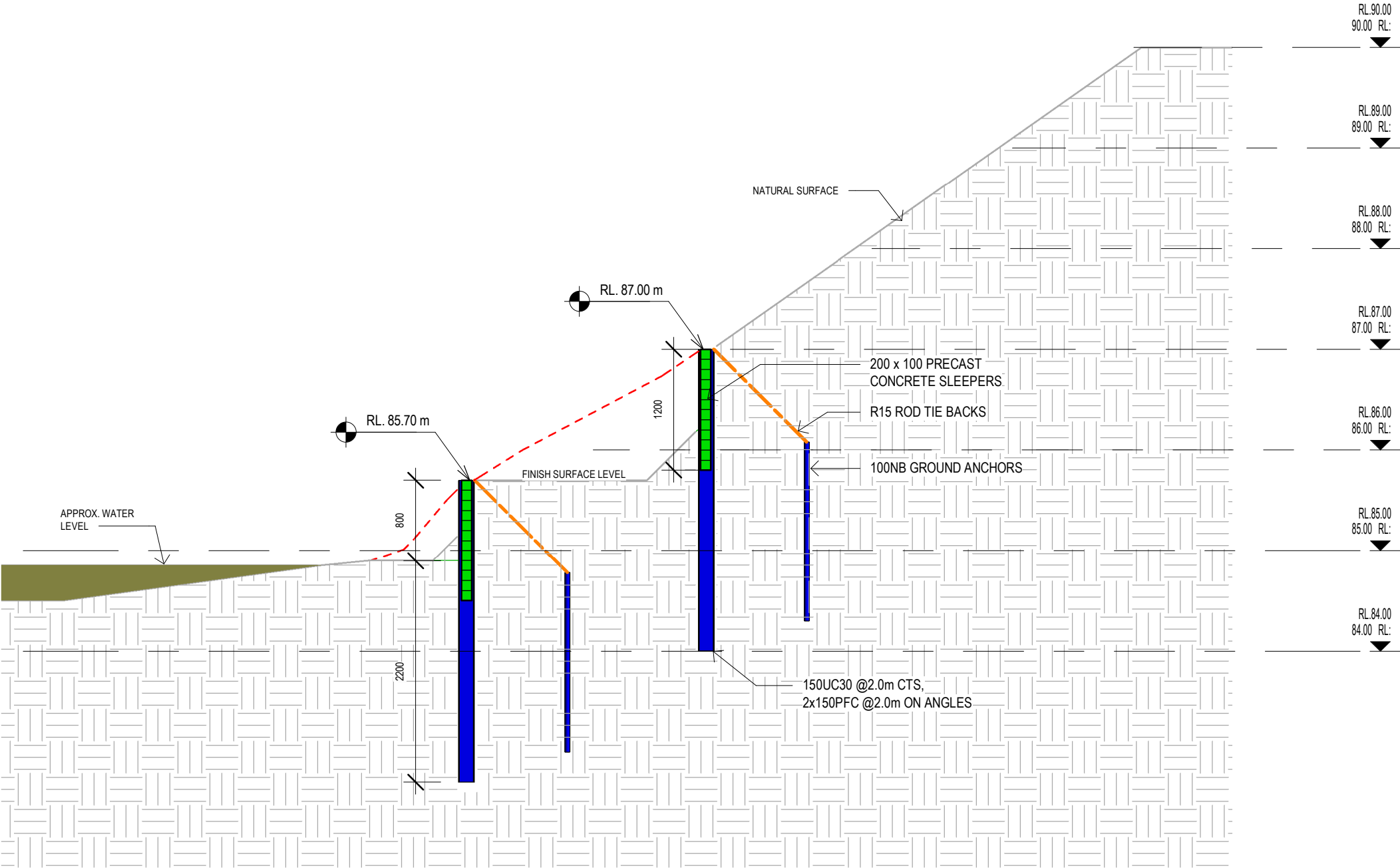


WESTERN SIDE RETAINING WALL
SCALE - 1 : 100


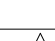


EASTERN SIDE RETAINING WALL
SCALE - 1 : 100

| | | | | | | | | | |
|------------------|---|--------------------|---|------------|--------------------|-------------------------|--|------|---|
| PROJECT ENGINEER |  | CONSTRUCTION ISSUE | CI | 17/12/2024 | CONSTRUCTION ISSUE | | J.C | | |
| | | | Index | Date | Description | Author | | | |
| | | |  | | | CLIENT T. & A. RAPER | | | |
| | | | PROJECT - WESTERN LOW RETAINING WALL LOT (DP 285128), SOUTH DENILQUIN COUNTY, NSW | | | | | | |
| | | | DRAWN BY | DATE | SCALE | PROJECT No. | DRG No. A101 RETAINING WALL ENLARGED PLAN | Rev. |  |
| | | | J.C.C. | 17/12/2024 | 1 : 100 | 24-S2533 | | | |



TYPICAL SECTION
SCALE - 1 : 50

| | | | | | | | | | | |
|------------------|---|--------------------|-------------|------------|--------------------|---|--|--|--|--|
| PROJECT ENGINEER |  | CONSTRUCTION ISSUE | CI | 17/12/2024 | CONSTRUCTION ISSUE | | | J.C | | |
| | | | Index | Date | Description | | | Author | | |
| | | | | | | | | | | |
| | | | | | | | | CLIENT T. & A. RAPER | | |
| | | | | | | | | PROJECT - WESTERN LOW RETAINING WALL LOT (DP 285128), SOUTH DENILIQUIN COUNTY, NSW | | |
| DRAWN BY | DATE | SCALE | PROJECT No. | DRG No. | Rev. |  | | | | |
| J.C.C. | 17/12/2024 | 1 : 50 | 24-S2533 | A200 | SECTION | | | | | |